

MA5I68 I/O EXTENSION MODULE

4 digital inputs

Art.No.: 56425

Weight: 0.162

Country of origin: CZ

Model designation: MASI68 DI4/0,2A Y AB E 4xM12

Expansion module

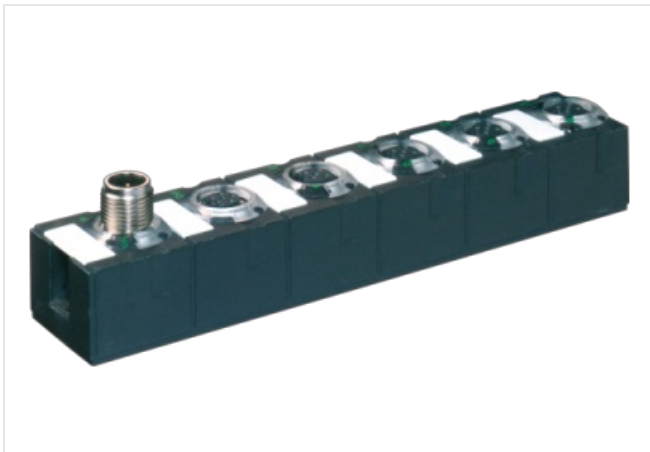
DI4 - 0.2 A (E) - 4× M12 (AB) (Y)

Connection cables are in the online shop under "Connection Technology".

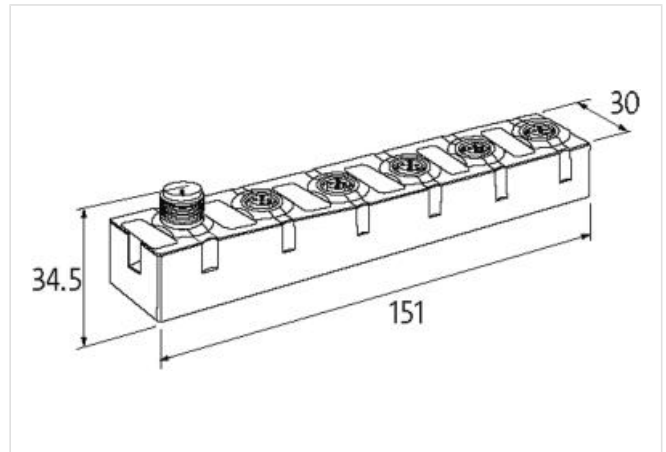
Housing fully potted.

[Link to Product](#)

Illustration



Product may differ from Image



Commercial data

ECLASS-6.0	27242604
ECLASS-6.1	27242604
ECLASS-7.0	27242604
ECLASS-8.0	27242604
ECLASS-9.0	27242604
ECLASS-10.1	27242604
ECLASS-11.1	27242604
ECLASS-12.0	27242604
ETIM-5.0	EC001599
customs tariff number	85176200
customs tariff number	85176200
GTIN	4048879048897
GTIN	4048879048897
Packaging unit	1
Packaging unit	1

Electrical data | Supply

Bus voltage AS-Interface DC min.	26,5 V
----------------------------------	--------

Bus voltage AS-Interface DC max.	31,6 V
Current consumption AS-i port max.	250 mA

Electrical data | Input

Type input	PNP, for 3-wire sensors or mechanical switches
Overload resistant	yes
Short-circuit protected	yes
Current carrying capacity max.	0,2 A

Industrial communication | Bus data

Address setting type	M12 connection and programming device, Master
Slave address range	(0), 1 A...31 A, 1 B...31 B

Industrial communication | AS-Interface

Profile (IO.ID.ID2)	S-0.A.2
---------------------	---------

Diagnostics

Diagnostic	No voltage
Diagnostic via LED	per module
LED display	Ethernet connection/data traffic

Device protection | Electrical

Degree of protection (EN IEC 60529)	IP68
-------------------------------------	------

Mechanical data | Mounting data

Mounting method	screwed
Height	151 mm
Width	30 mm
Depth	34,5 mm

Environmental characteristics | Climatic

Operating temperature min.	-20 °C
Operating temperature max.	60 °C
Storage temperature min.	-20 °C
Storage temperature max.	70 °C

Connection type 4

Connection type 1	A C
Connection type 2	B D
Connection type 3	Bus In
Connection type 4	Bus Out
Family construction form	M12
Gender	female
Color contact carrier	black
Coding	A
No. of poles	5
PIN 1	Usens +
PIN 2	DI
PIN 3	Usens -
PIN 4	DI
PIN 5	n.c.
Family construction form	M12
Gender	female
Color contact carrier	black
Coding	A
No. of poles	5
PIN 1	Usens +
PIN 2	n.c.
PIN 3	Usens -

PIN 4	DI
PIN 5	n.c.
Family construction form	M12
Gender	male
Color contact carrier	black
Coding	A
No. of poles	4
PIN 1	AS-i +
PIN 2	0 V
PIN 3	AS-i -
PIN 4	24 V DC
Family construction form	M12
Gender	female
Color contact carrier	black
Coding	A
No. of poles	5
PIN 1	AS-i +
PIN 2	0 V
PIN 3	AS-i -
PIN 4	24 V DC
PIN 5	n.c.