

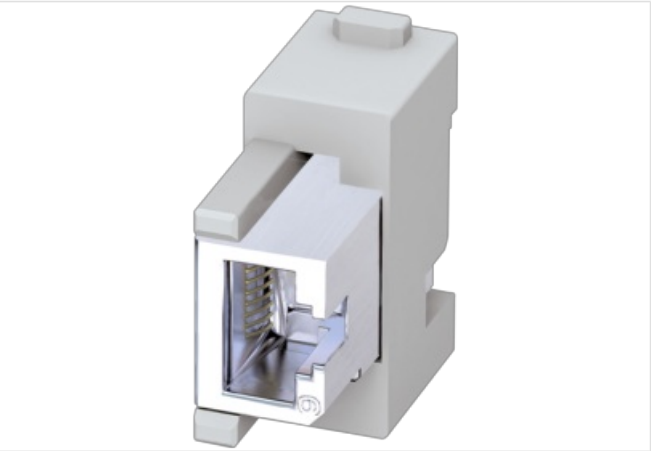
RJ45 module - female

Art.No.: 70MH-MAM10-0000000  
Weight: 0.025  
Country of origin: PL  
Model designation: MSMH-MBUM-1M-RJ45MODUL

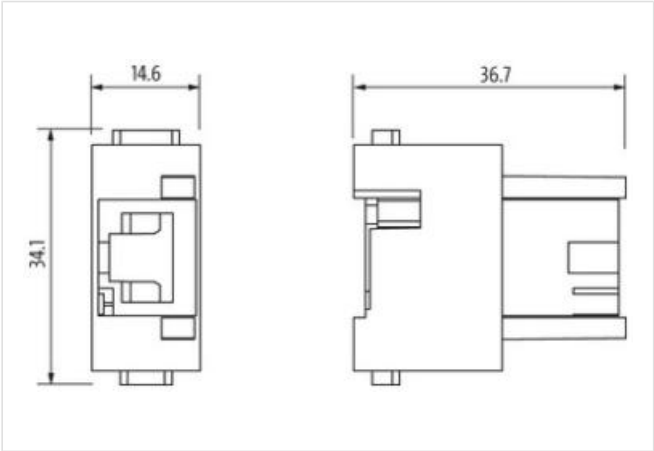
Female  
RJ45  
Technical data will be only guaranteed with Murrelektronik components.  
The clip 70MH-ZZ100-0000000 is needed (2x)

Link to Product

Illustration



Product may differ from Image



| Commercial data          |               |
|--------------------------|---------------|
| ECLASS-6.0               | 27143424      |
| ECLASS-6.1               | 27261204      |
| ECLASS-7.0               | 27440204      |
| ECLASS-8.0               | 27440204      |
| ECLASS-9.0               | 27440204      |
| ECLASS-10.1              | 27440204      |
| ECLASS-11.1              | 27440204      |
| ECLASS-12.0              | 27440204      |
| ETIM-5.0                 | EC000437      |
| customs tariff number    | 85366990      |
| customs tariff number    | 85366990      |
| GTIN                     | 4048879664066 |
| GTIN                     | 4048879664066 |
| Packaging unit           | 1             |
| Packaging unit           | 1             |
| Electrical data   Supply |               |
| Operating voltage AC     | 50 V          |
| Operating voltage DC     | 50 V          |
| Industrial communication |               |

Transfer parameters CAT6A (IEC 60512-27-100:2008, TIA-568-C.2:2009)

| Installation   Connection                |             |
|--|-------------|
| Gender                                   | female      |
| Mating cycles min.                       | 500         |
| Device protection   Electrical           |             |
| Pollution Degree                         | 3           |
| Rated surge voltage                      | 0,8 kV      |
| Overvoltage category (EN 60950-1)        | III         |
| Mechanical data   Material data          |             |
| Material housing                         | PC          |
| Coating contact                          | gold plated |
| Combustibility class (UL94)              | V-0         |
| Material contact                         | Cu          |
| Mechanical data   Mounting data          |             |
| Number of module slots                   | 1           |
| Height                                   | 41 mm       |
| Width                                    | 34,1 mm     |
| Depth                                    | 14,6 mm     |
| Environmental characteristics   Climatic |             |
| Operating temperature min.               | -40 °C      |
| Operating temperature max.               | 70 °C       |