

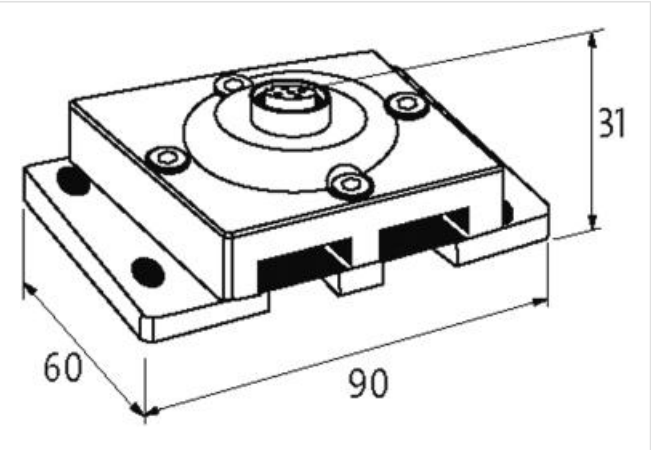
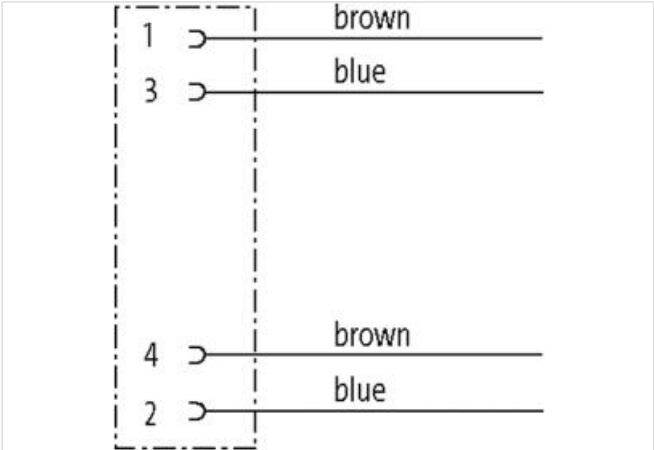
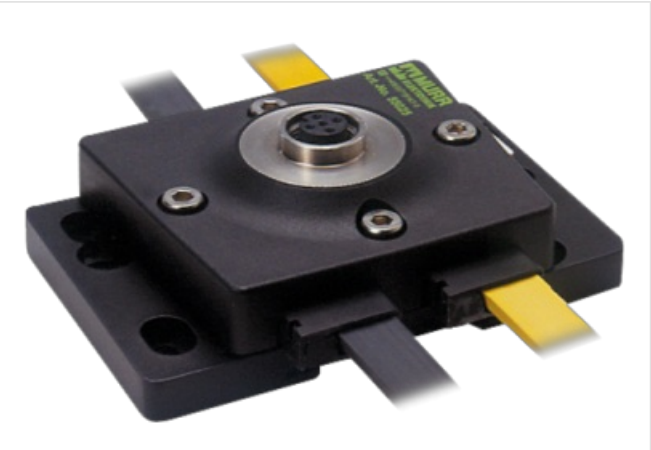
**MASI67 INSTALLATION TECHNOLOGY**

Converter 2x profile cable to M12 female

MASI67 converter  
2x profile cable to M12 (female)  
Connection cables are in the online shop under "Connection Technology".

[Link to Product](#)

Illustration



Product may differ from Image



Commercial data	
ECLASS-6.0	27400209
ECLASS-6.1	27279219
ECLASS-7.0	27279219
ECLASS-8.0	27279219
ECLASS-9.0	27440108
ECLASS-10.1	27440111

ECLASS-11.1	27440111
ECLASS-12.0	27440111
ETIM-5.0	EC001583
customs tariff number	85369010
GTIN	4048879052146
Packaging unit	1

**Electrical data | Supply**

Operating voltage DC max.	36 V
Total current max.	4 A

**Device protection | Electrical**

Degree of protection (EN IEC 60529)	IP67
Insulation strength ASI/Power	200 V

**Mechanical data | Mounting data**

Mounting method	screwed, geschnappt
Suitable for mounting type	mounting rail, (EN 60715)
Height	90 mm
Width	74 mm
Depth	30,5 mm

**Environmental characteristics | Climatic**

Operating temperature min.	-20 °C
Operating temperature max.	60 °C
Storage temperature min.	-40 °C
Storage temperature max.	80 °C

**Conformity**

Product standard	EN 60664-1
------------------	------------

**Connection type 1**

Connection type 1	Bus Out
Family construction form	M12
Gender	female
Color contact carrier	black
Coding	A
No. of poles	5
PIN 1	AS-i +
PIN 2	0 V
PIN 3	AS-i -
PIN 4	24 V DC
PIN 5	n.c.