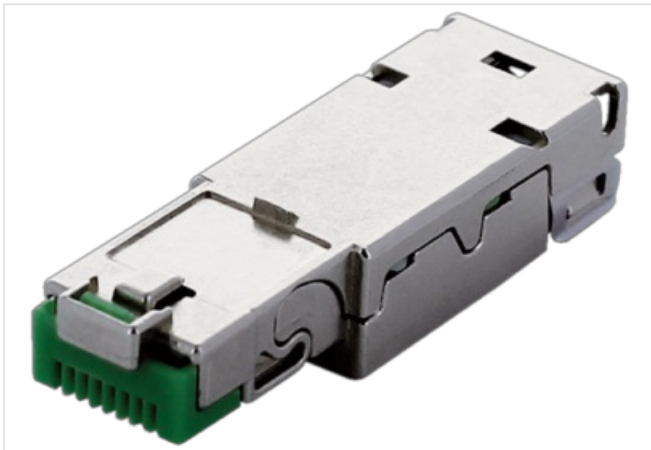


RJ45 IP20 MALE 0° 8 pol.-0,14 mm²...0,25 mm²

Male
 RJ45
 8-pole, shielded
 for 70MH-MAL10-0010000
 Technical data will be only guaranteed with Murrelektronik components.

[Link to Product](#)**Illustration**

Product may differ from Image

Commercial data

ECLASS-6.0	27261204
ECLASS-7.0	27440205
ECLASS-8.0	27440205
ECLASS-9.0	27440205
ETIM-5.0	EC002636
customs tariff number	85366990
GTIN	4048879751827
Packaging unit	1

Electrical data | Supply

Operating voltage AC	50 V
Operating voltage DC	50 V
Operating current	1,75 A

Industrial communication

Transfer parameters	CAT5
Data transmission rate max.	1000 MBit/s

Installation

Connection cross section min.	0,14 mm²
Connection cross section max.	0,25 mm²

Installation | Connection

Wire insulation diameter min.	1,6 mm
Connection	Cut clamps IDC
Family construction form	RJ45
Mating cycles min.	750

Installation | Pin assignment

No. of poles 8

Device protection | Electrical

Overvoltage category (EN 60950-1) I

Mechanical data | Material data

Coating contact gold plated

Combustibility class (UL94) V-0

Material housing Zinc die-casting

Material contact Copper alloy

Material contact carrier PC

Mechanical data | Mounting data

Height 9,5 mm

Width 13,7 mm

Depth 43,5 mm

Environmental characteristics | Climatic

Operating temperature min. -40 °C

Operating temperature max. 70 °C