

MOELLER CONTACTOR SUPPRESSOR

RC, 110/230VAC

110 V AC/DC

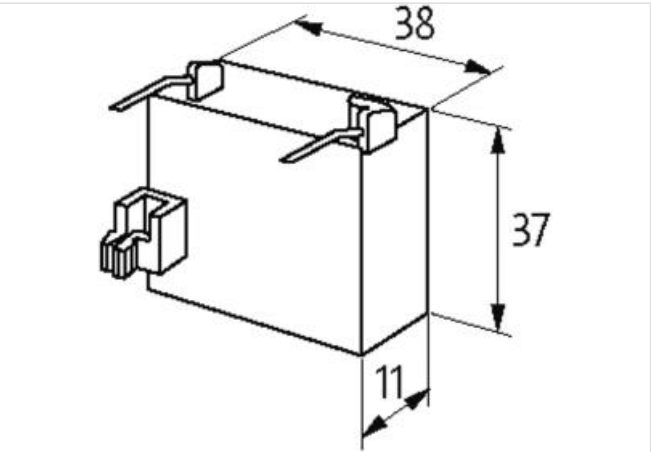
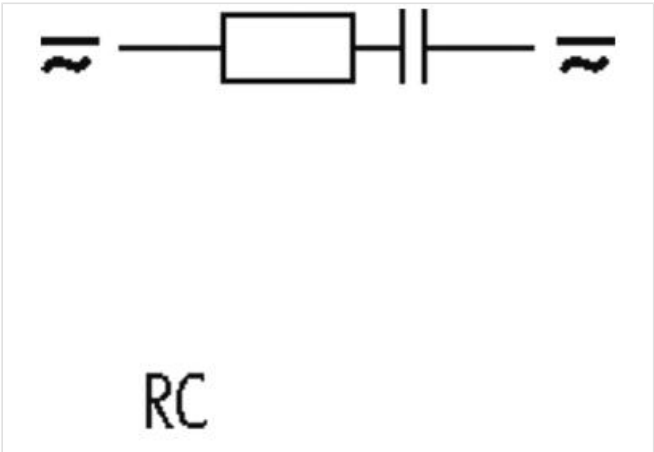
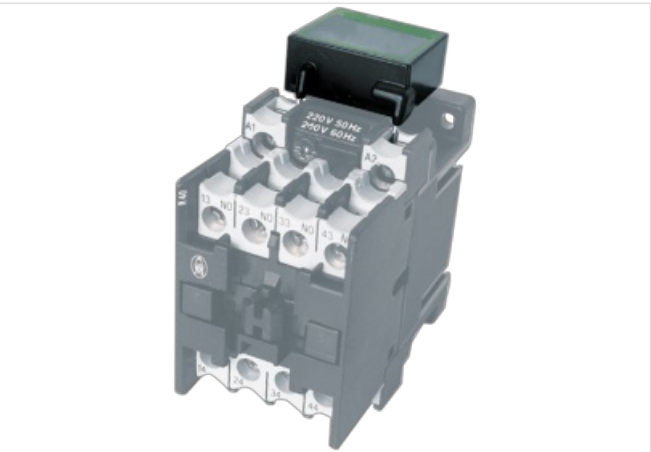
230 V AC/DC

RC

For other configurations and voltages, please inquire.

[Link to Product](#)

Illustration



Product may differ from Image



Commercial data	
ECLASS-6.0	27371013
ECLASS-6.1	27371013
ECLASS-7.0	27371013
ECLASS-8.0	27371013
ECLASS-9.0	27371013
ECLASS-10.1	27371013

ECLASS-11.1	27371013
ECLASS-12.0	27371013
ETIM-5.0	EC002498
customs tariff number	85363010
GTIN	4048879020237
Packaging unit	1
Compatibility Compatible with	
Appropriate contactors	DIL 0-2...M, DIL R..
Electrical data	
Damping factor	1.5× UN
Electrical data Input	
Input voltage AC min.	110 V
Input voltage AC max.	253 V
Input voltage DC min.	110 V
Input voltage DC max.	253 V
Installation Connection	
Connection information	Plug contact
Device protection Media	
Flame resistance	flame retardant
Mechanical data Material data	
Combustibility class housing (UL94)	V-0
Material housing	Plastic
Mechanical data Mounting data	
Height	37 mm
Width	38 mm
Depth	11 mm