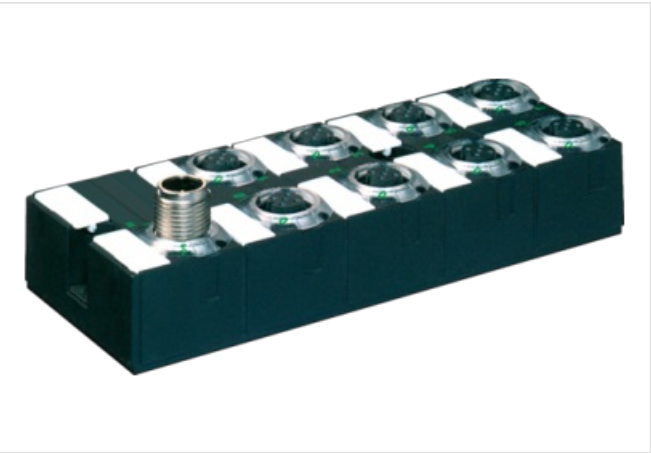


MA5I68 DI4/0,19A DO4/2A 8xM12

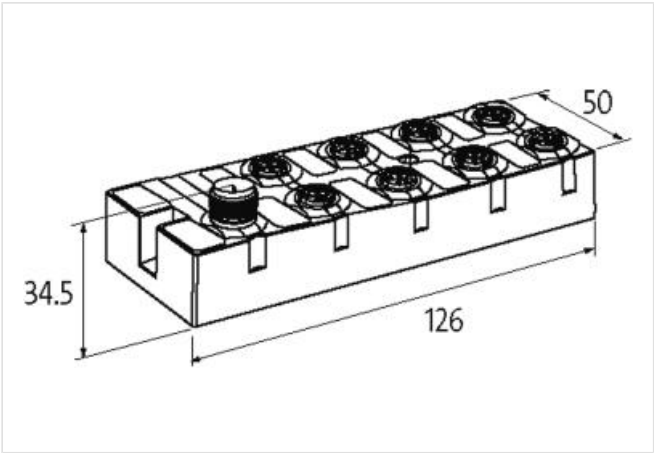
Compact module
DI4 - 0.2 A DO4 - 2 A (C) - 8× M12
Connection cables are in the online shop under "Connection Technology".
Housing fully potted.

Link to Product

Illustration



Product may differ from Image



Commercial data	
ECLASS-6.0	27242604
ECLASS-6.1	27242604
ECLASS-7.0	27242604
ECLASS-8.0	27242604
ECLASS-9.0	27242604
ECLASS-10.1	27242604
ECLASS-11.1	27242604
ECLASS-12.0	27242604
ETIM-5.0	EC001599
customs tariff number	85176200
GTIN	4048879048798
Packaging unit	1
Electrical data Supply	
Bus voltage AS-Interface DC min.	26,5 V
Bus voltage AS-Interface DC max.	31,6 V
Current consumption AS-i port max.	250 mA
Total current max.	4 A
Electrical data Input	
Overload resistant	yes
Short-circuit protected	yes
Type input	PNP, for 3-wire sensors or mechanical switches

Current carrying capacity max. 0,2 A

Electrical data | Output

Overload resistant	yes
Short-circuit protected	yes
Output current per pin max.	2 A

Industrial communication | Bus data

Address setting type	M12 connection and programming device, Master
Slave address range	(0), 1 ...

Industrial communication | AS-Interface

AS-i Power 24	yes
Profile (IO.ID.ID2)	S-7.0.7

Diagnostics

Diagnostic	No voltage
Diagnostic via LED	per module
LED display	Ethernet connection/data traffic

Device protection | Electrical

Degree of protection (EN IEC 60529)	IP68
-------------------------------------	------

Mechanical data | Mounting data

Mounting method	screwed
Height	126 mm
Width	50 mm
Depth	34,5 mm

Environmental characteristics | Climatic

Operating temperature min.	-20 °C
Operating temperature max.	60 °C
Storage temperature min.	-20 °C
Storage temperature max.	70 °C

Connection type 3

Connection type 1	B D
Connection type 2	AUX
Connection type 3	F H
Family construction form	M12
Gender	female
Color contact carrier	black
Coding	A
No. of poles	5
PIN 1	Usens +
PIN 2	DI
PIN 3	Usens -
PIN 4	DI
PIN 5	n.c.
Family construction form	M12
Gender	male
Color contact carrier	black
Coding	A
No. of poles	4
PIN 1	AS-i +
PIN 2	0 V AUX POWER
PIN 3	AS-i -
PIN 4	24 V DC AUX POWER
Family construction form	M12

Gender	female
Color contact carrier	black
Coding	A
No. of poles	5
PIN 1	n.c.
PIN 2	DO
PIN 3	0 V
PIN 4	DO
PIN 5	FE