

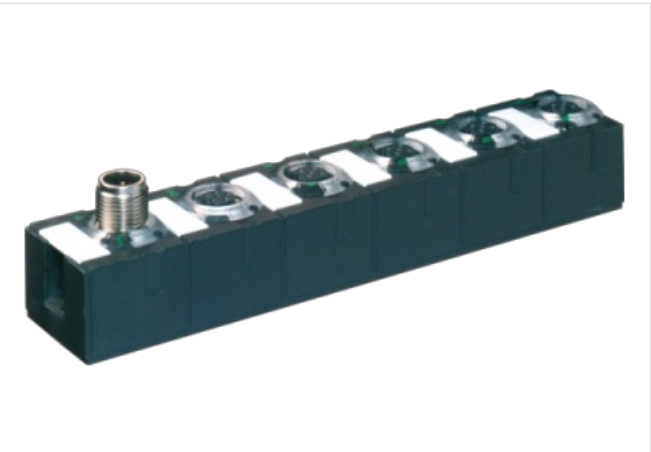
MA5I68 I/O EXTENSION MODULE

8 digital inputs

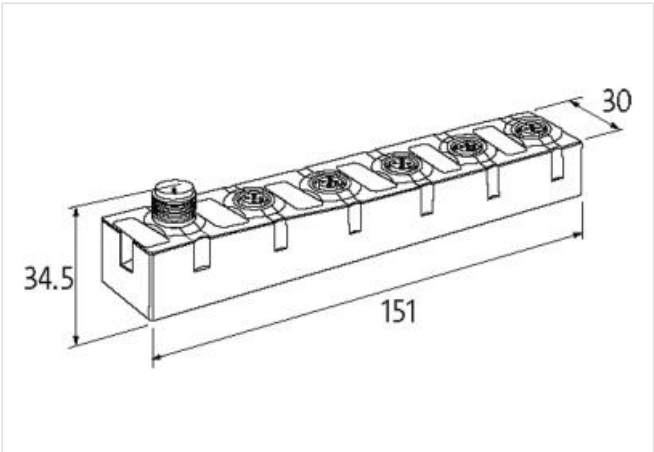
Expansion module  
DI8 - 0.19 A (E) - 4× M12 (AB) AUX  
Connection cables are in the online shop under "Connection Technology".  
Housing fully potted.

Link to Product

Illustration



Product may differ from Image



Commercial data	
ECLASS-6.0	27242604
ECLASS-6.1	27242604
ECLASS-7.0	27242604
ECLASS-8.0	27242604
ECLASS-9.0	27242604
ECLASS-10.1	27242604
ECLASS-11.1	27242604
ECLASS-12.0	27242604
ETIM-5.0	EC001599
customs tariff number	85176200
GTIN	4048879332484
Packaging unit	1
Electrical data   Supply	
Bus voltage AS-Interface DC min.	26,5 V
Bus voltage AS-Interface DC max.	31,6 V
Current consumption AS-i port max.	250 mA
Electrical data   Input	
Overload resistant	yes
Short-circuit protected	yes
Type input	PNP, for 3-wire sensors or mechanical switches

Current carrying capacity max. 0,19 A

#### Industrial communication | Bus data

Address setting type M12 connection and programming device, Master  
 Slave address range (0), 1 A...31 A, 1 B...31 B

#### Industrial communication | AS-Interface

Profile (IO.ID.ID2) 2× S-0.A.2

#### Diagnostics

Diagnostic No voltage  
 Diagnostic via LED per module  
 LED display Ethernet connection/data traffic

#### Device protection | Electrical

Degree of protection (EN IEC 60529) IP68

#### Mechanical data | Mounting data

Mounting method screwed  
 Height 151 mm  
 Width 30 mm  
 Depth 34,5 mm

#### Environmental characteristics | Climatic

Operating temperature min. -20 °C  
 Operating temperature max. 60 °C  
 Storage temperature min. -20 °C  
 Storage temperature max. 70 °C

#### Connection type 3

Connection type 1	A-D
Connection type 2	Bus In
Connection type 3	Bus Out
Family construction form	M12
Gender	female
Color contact carrier	black
Coding	A
No. of poles	5
PIN 1	Usens +
PIN 2	DI
PIN 3	Usens -
PIN 4	DI
PIN 5	n.c.
Family construction form	M12
Gender	male
Color contact carrier	black
Coding	A
No. of poles	4
PIN 1	AS-i +
PIN 2	0 V
PIN 3	AS-i -
PIN 4	24 V DC
Family construction form	M12
Gender	male
Color contact carrier	black
Coding	A
No. of poles	5
PIN 1	AS-i +

PIN 2	0 V
PIN 3	AS-i -
PIN 4	24 V DC
PIN 5	n.c.