

MA5I68 I/O EXTENSION MODULE

4 analog Inputs U/I configurable

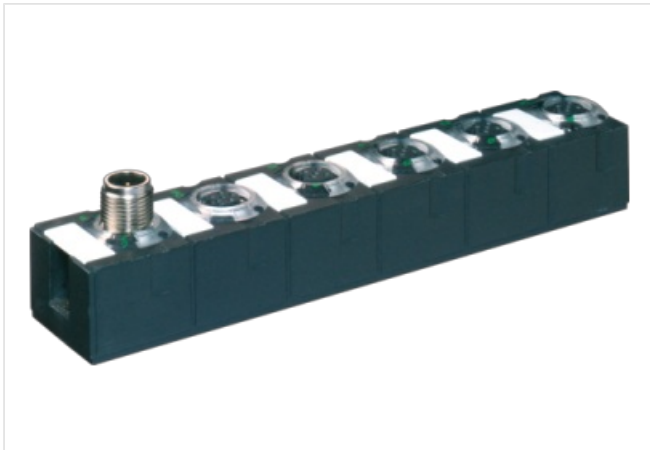
AI4 - (E) 4× M12 (UI)

Connection cables are in the online shop under "Connection Technology".

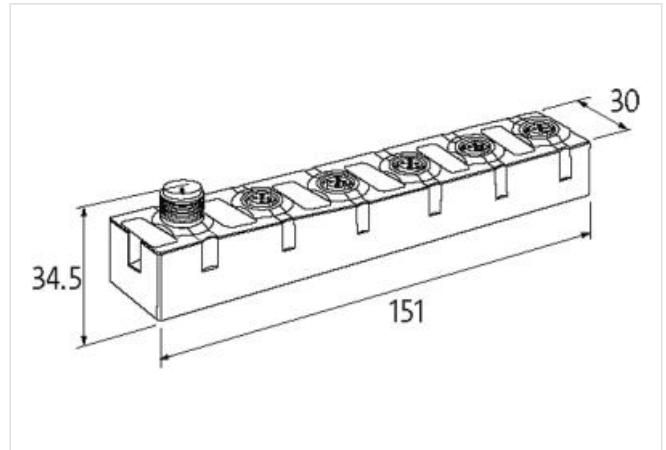
Housing fully potted.

[Link to Product](#)

Illustration



Product may differ from Image



Commercial data

ECLASS-6.0	27242601
ECLASS-6.1	27242601
ECLASS-7.0	27242601
ECLASS-8.0	27242601
ECLASS-9.0	27242601
ECLASS-10.1	27242601
ECLASS-11.1	27242601
ECLASS-12.0	27242601
ETIM-5.0	EC001596
customs tariff number	85176200
GTIN	4048879496681
Packaging unit	1

Electrical data | Supply

Norm operating voltage	EN 61131-2
Operating voltage US DC	24 V
Bus voltage AS-Interface DC min.	26,5 V
Bus voltage AS-Interface DC max.	31,6 V
Current consumption AS-i port max.	100 mA

Electrical data | Input

Overload resistant	yes
Short-circuit protected	yes

Sensor current US per input max. 0,1 A

Industrial communication | Bus data

Address setting type M12 connection and programming device, Master
 Slave address range 1 ... 31

Industrial communication | AS-Interface

Profile (IO.ID.ID2) S-7.3.E

Diagnostics

Diagnostic No voltage
 Diagnostic via LED per module
 LED display Ethernet connection/data traffic

Device protection | Electrical

Degree of protection (EN IEC 60529) IP68

Mechanical data | Mounting data

Mounting method screwed
 Height 151 mm
 Width 30 mm
 Depth 34,5 mm

Environmental characteristics | Climatic

Operating temperature min. -20 °C
 Operating temperature max. 70 °C
 Storage temperature min. -40 °C
 Storage temperature max. 85 °C

Connection type 3

Connection type 1 0-3
 Connection type 2 Bus In
 Connection type 3 Bus Out
 Family construction form M12
 Gender female
 Color contact carrier black
 Coding A
 No. of poles 5
 PIN 1 24 V DC
 PIN 2 In +
 PIN 3 0 V
 PIN 4 In -
 PIN 5 n.c.
 Family construction form M12
 Gender male
 Color contact carrier black
 Coding A
 No. of poles 4
 PIN 1 AS-i +
 PIN 2 0 V
 PIN 3 AS-i -
 PIN 4 24 V DC
 Family construction form M12
 Gender female
 Color contact carrier black
 Coding A
 No. of poles 5
 PIN 1 AS-i +

PIN 2	0 V
PIN 3	AS-i -
PIN 4	24 V DC
PIN 5	n.c.