

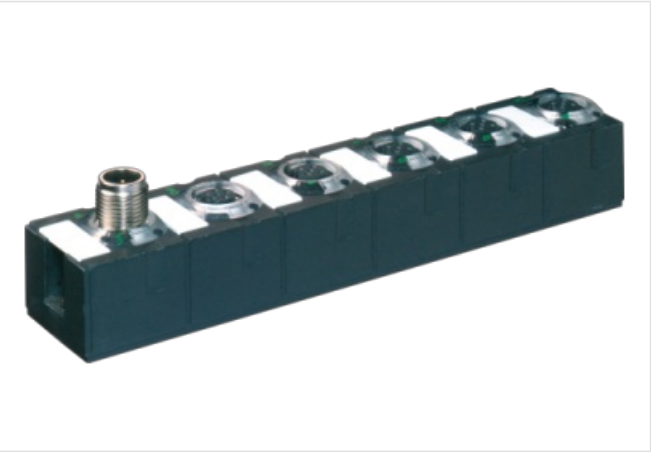
CUBE67+ I/O EXTENSION MODULE

4 multif. channels + RS232/485/MOVIMOT

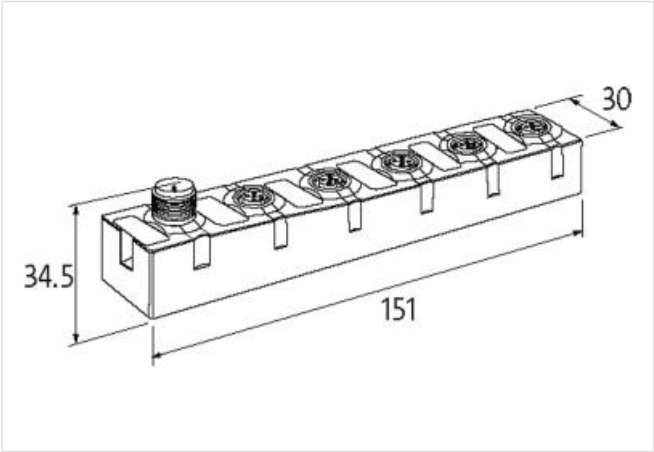
Expansion module  
DIO4 RS232/485 (E) - 4x M12 MOVIMOT®  
Serial interface  
Digital inputs/outputs (multifunctional)  
Connection cables are in the online shop under "Connection Technology".  
Housing fully potted.  
Cube67+ modules can only be operated on Cube67+, EtherNet/IP, PROFIBUS + PROFINET bus nodes.

Link to Product

Illustration



Product may differ from Image



General product information

Compatible with: 56521; 56526

Commercial data

ECLASS-6.0	27242604
ECLASS-6.1	27242604
ECLASS-7.0	27242604
ECLASS-8.0	27242604
ECLASS-9.0	27242604
ECLASS-10.1	27242604
ECLASS-11.1	27242604
ECLASS-12.0	27242604
ETIM-5.0	EC001601
customs tariff number	85389099
GTIN	4048879048132
Packaging unit	1

Electrical data | Supply

Norm operating voltage	EN 61131-2
Operating voltage US DC	24 V

Operating voltage UA DC	24 V
Current consumption max.	80 mA
Total current UA max.	4 A
Total current US max.	4 A

**Electrical data | Input**

Overload resistant	yes
Short-circuit protected	yes
Type input	PNP, for 3-wire sensors or mechanical switches
Input filter time	1 ms
Sensor current US per input max.	0,2 A

**Electrical data | Output**

Overload resistant	yes
Short-circuit protected	yes
Output current per pin max.	0,5 A
Lamp load	10 W

**Industrial communication**

Data transmission rate max.	230,4 KBit/s
-----------------------------	--------------

**Industrial communication | Ethernet functionality**

duplex	Full or half duplex
--------	---------------------

**Diagnostics**

Actuator warning	per channel via LED and BUS
Diagnostic	No voltage, Under voltage
Diagnostic via BUS	per module and channel
Diagnostic via LED	per module and channel
Short circuit diagnosis	yes
LED display	Ethernet connection/data traffic
Overload diagnosis	yes

**Device protection | Electrical**

Degree of protection (EN IEC 60529)	IP67
-------------------------------------	------

**Mechanical data | Mounting data**

Suitable for mounting type	2-hole screw mounting
Height	151 mm
Width	30 mm
Depth	34,5 mm

**Environmental characteristics | Climatic**

Operating temperature min.	0 °C
Operating temperature max.	55 °C
Storage temperature min.	-20 °C
Storage temperature max.	75 °C

**Connection type 5**

Connection type 1	Bus In
Connection type 2	Bus Out
Connection type 3	I / O
Connection type 4	RS232
Connection type 5	RS485
Family construction form	M12
Gender	male
Color contact carrier	black
Coding	A
No. of poles	6

PIN 1	24 V DC (UA)
PIN 2	24 V DC (US)
PIN 3	0 V
PIN 4	Bus internal
PIN 5	Bus internal
PIN 6	0 V
Family construction form	M12
Gender	female
Color contact carrier	black
Coding	A
No. of poles	6
PIN 1	24 V DC (UA)
PIN 2	24 V DC (US)
PIN 3	0 V
PIN 4	Bus internal
PIN 5	Bus internal
PIN 6	0 V
Family construction form	M12
Gender	female
Color contact carrier	black
Coding	A
No. of poles	5
PIN 1	24 V DC
PIN 2	DI / DO / Diag
PIN 3	0 V
PIN 4	DI / DO
PIN 5	FE
Family construction form	M12
Gender	female
Color contact carrier	black
Coding	B
No. of poles	5
PIN 1	RTS
PIN 2	TXD
PIN 3	0 V (separated)
PIN 4	RXD
PIN 5	CTS
Family construction form	M12
Gender	female
Color contact carrier	black
Coding	B
No. of poles	5
PIN 1	24 V DC
PIN 2	RS -
PIN 3	0 V
PIN 4	RS +
PIN 5	FE