

S-Lamp 22 L M12(4)

Lamp

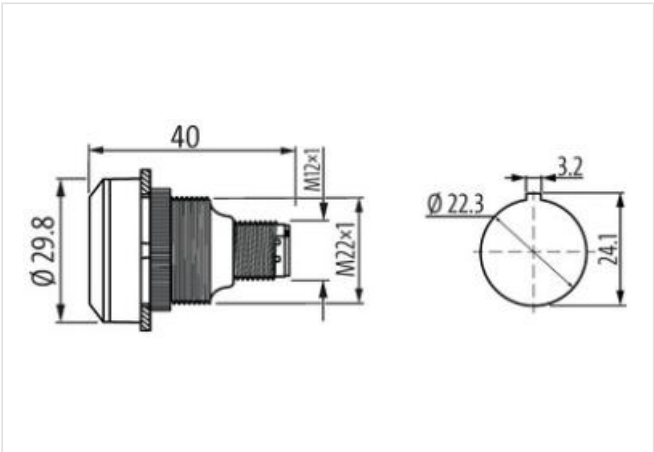
S-Lamp 22 L M12(4)
Lamp
Mounting hole 22,3 mm
Connection M12 (4-pin)

Link to Product

Illustration



Product may differ from Image



Commercial data

ECLASS-6.1	27371223
ECLASS-7.0	27371223
ECLASS-8.0	27371223
ECLASS-9.0	27371223
ECLASS-10.1	27371223
ECLASS-11.1	27371223
ECLASS-12.0	27371223
ETIM-5.0	EC000272
customs tariff number	94054231
GTIN	4065909019245
Packaging unit	1

Electrical data | Supply

Operating voltage DC	24 V
Operating voltage DC min.	20 V
Operating voltage DC max.	28 V
Rated operating current	0,01 A
Operating current max.	12 mA

Electrical data | Input

Short-circuit current	1000 A
-----------------------	--------

Installation | Connection

Family construction form M12

Installation Pin assignment	
Coding	A
No. of poles	4
Device protection Electrical	
Installation height max. ASL	2000 m
Degree of protection front (EN IEC 60529)	IP66, IP67, IP69
Degree of protection back (EN IEC 60529)	IP66, IP67
Pollution Degree	2
Short circuit protective device (SCPD)	fuse 250 V / 0.1 A / 1.5 kA gG quick
Rated insulation voltage	250 V
Overvoltage category (EN 60950-1)	II
Device protection Mechanical	
UL enclosure type rating front side	type 4X
Device protection Media	
Salt-spray resistance (IEC 60068-2-11)	yes
Mechanical data	
Can be illuminated	yes
Color	black
Color collar	black
Color illuminant	white
Shape collar	round
Type of illuminant	LED
Mechanical data Material data	
Material housing	Plastic
Mechanical data Mounting data	
Mounting method	Threaded ring
Installation height	9,8 mm
Mounting depth	36,4 mm
Mounting hole	22,3 mm
Height	29,8 mm
Width	40 mm
Grid min.	30 mm
Environmental characteristics Climatic	
Operating temperature min.	-25 °C
Operating temperature max.	70 °C
Derating from	40 °C
Storage temperature min.	-40 °C
Storage temperature max.	90 °C
Relative humidity max. (operation)	93 %
Connection type 2	
Family construction form	M12
Gender	male
Color contact carrier	black
Coding	A
No. of poles	4
PIN 2	LED (A)
PIN 3	LED (K)
Family construction form	M12
Gender	male

Coding	A
No. of poles	4
PIN 2	LED (A)
PIN 3	LED (K)