

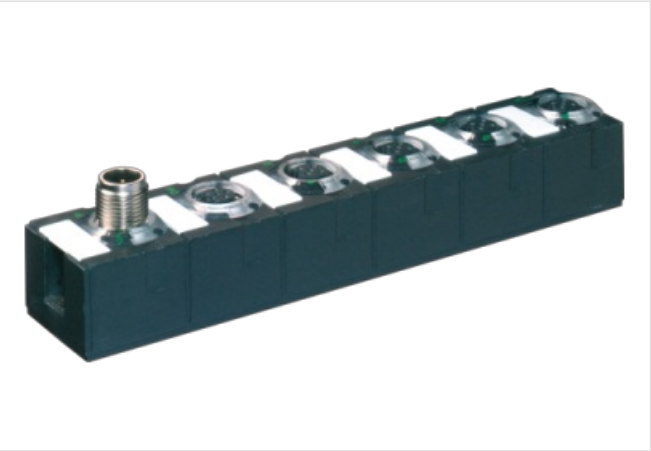
CUBE67 I/O EXTENSION MODULE, VA

4 analog inputs

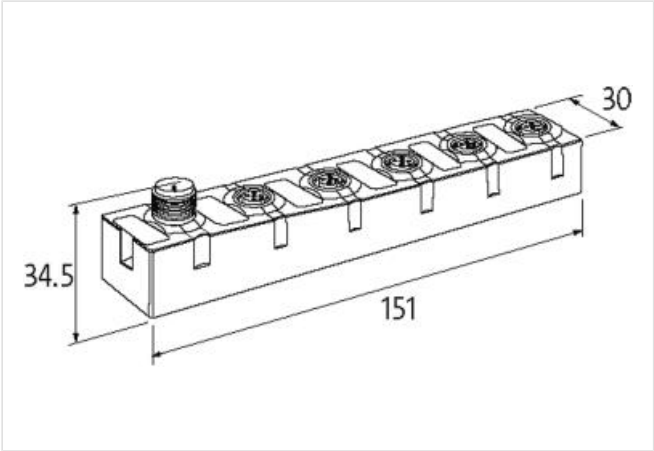
Expansion module
AI4 - (E) 4× M12 (U)
Voltage
Metal parts: Stainless steel
Connection cables are in the online shop under "Connection Technology".
Housing fully potted.

Link to Product

Illustration



Product may differ from Image



Commercial data	
ECLASS-6.0	27242601
ECLASS-7.0	27242601
ECLASS-8.0	27242601
ECLASS-9.0	27242601
ETIM-5.0	EC001596
customs tariff number	85389099
GTIN	4048879044837
Packaging unit	1
Electrical data Supply	
Norm operating voltage	EN 61131-2
Operating voltage US DC	24 V
Current consumption max.	50 mA
Total current UA max.	4 A
Total current US max.	4 A
Electrical data Input	
Overload resistant	yes
Short-circuit protected	yes
Input resistor	1000 kΩ

Sensor current US per input max.	0,2 A
----------------------------------	-------

Conversion time analog input per channel	2 ms
--	------

Industrial communication | Bus data

Internal system connection	yes
----------------------------	-----

Diagnostics

Actuator warning	per channel via LED and BUS
------------------	-----------------------------

Diagnostic	No voltage, Under voltage
------------	---------------------------

Diagnostic via BUS	per module and channel
--------------------	------------------------

Diagnostic via LED	per module and channel
--------------------	------------------------

Short circuit diagnosis	yes
-------------------------	-----

LED display	Ethernet connection/data traffic
-------------	----------------------------------

Overload diagnosis	yes
--------------------	-----

Device protection | Electrical

Degree of protection (EN IEC 60529)	IP67
-------------------------------------	------

Mechanical data | Mounting data

Suitable for mounting type	2-hole screw mounting
----------------------------	-----------------------

Height	151 mm
--------	--------

Width	30 mm
-------	-------

Depth	34,5 mm
-------	---------

Environmental characteristics | Climatic

Operating temperature min.	0 °C
----------------------------	------

Operating temperature max.	55 °C
----------------------------	-------

Storage temperature min.	-20 °C
--------------------------	--------

Storage temperature max.	75 °C
--------------------------	-------