

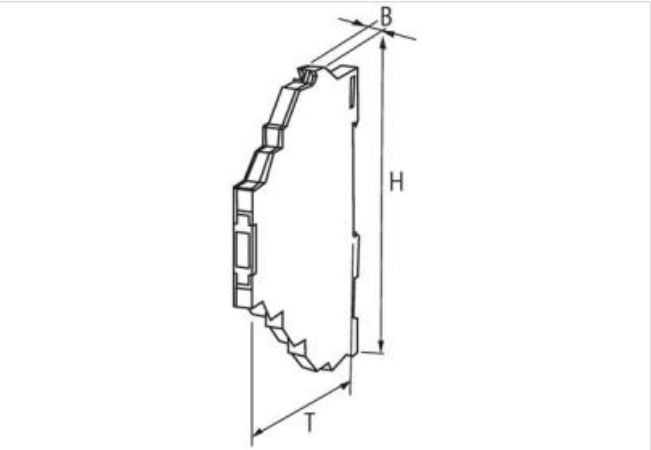
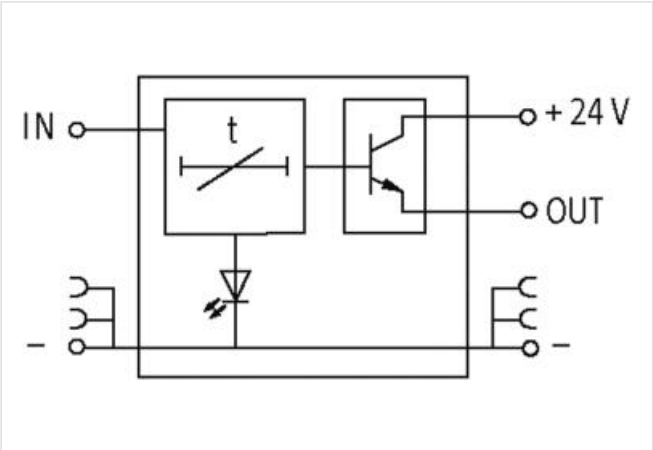
MIRO IMPULSE EXTENSION MODULES

IN: 24 VDC - OUT: 24 VDC / 0.1 A

Transistor output  
Impulse expansion: 0.1...10 s  
Spring clamp terminals

[Link to Product](#)

Illustration



Product may differ from Image



Commercial data	
ECLASS-6.0	27371790
ECLASS-6.1	27371790
ECLASS-7.0	27371790
ECLASS-8.0	27371605
ECLASS-9.0	27371605
ECLASS-10.1	27371605

ECLASS-11.1	27371605
ECLASS-12.0	27371605
ETIM-5.0	EC001439
customs tariff number	85437090
GTIN	4048879021913
Packaging unit	1

**Electrical data | Input**

Input voltage DC min.	19 V
Input voltage DC max.	29 V
Pulse length min.	0,5 ms
Control voltage DC min.	16 V
Control voltage DC max.	32 V

**Electrical data | Output**

Output voltage DC	24 V
Pulse time min.	0,1 s
Pulse time max.	10 s
Switching current max.	100 mA

**Mechanical data | Mounting data**

Mounting method	geschnappt
Suitable for mounting type	mounting rail, (EN 60715)
Height	91 mm
Width	6,2 mm
Depth	70 mm

**Environmental characteristics | Climatic**

Operating temperature min.	0 °C
Operating temperature max.	60 °C

**Connection type 4**

Connection	Spring clamp terminals FK
Family construction form	terminal
Gender	female
Color contact carrier	black
No. of poles	1
PIN 1	+
Connection	Spring clamp terminals FK
Family construction form	terminal
Gender	female
Color contact carrier	black
No. of poles	1
PIN 1	-
Connection	Spring clamp terminals FK
Family construction form	terminal
Gender	female
Color contact carrier	black
No. of poles	1
PIN 1	Out
Connection	Spring clamp terminals FK
Family construction form	terminal
Gender	female
Color contact carrier	black
No. of poles	1
PIN 1	In