

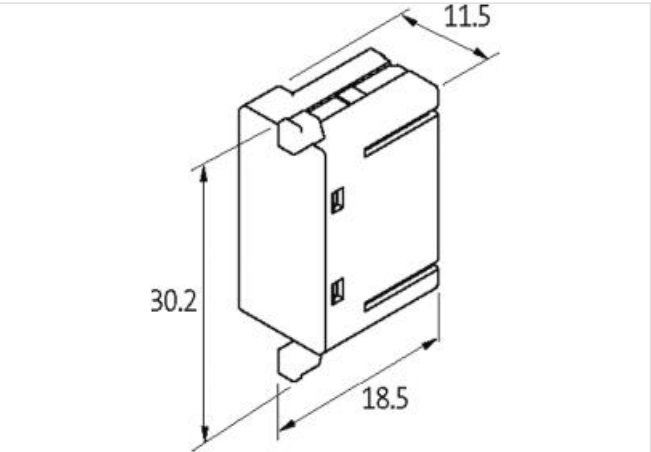
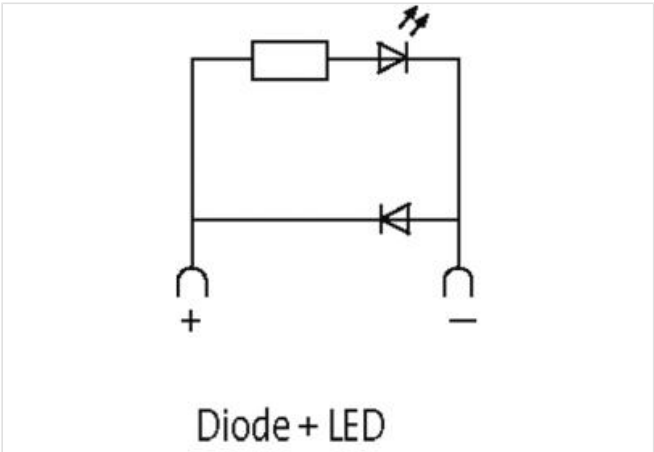
SIEMENS CONTACTOR SUPPRESSOR

Diode and LED, 24VDC

24 V AC/DC  
48 V AC/DC  
Diode + LED  
For other configurations and voltages, please inquire.

Link to Product

Illustration



Product may differ from Image



Commercial data	
ECLASS-6.0	27371013
ECLASS-6.1	27371013
ECLASS-7.0	27371013
ECLASS-8.0	27371013
ECLASS-9.0	27371013
ECLASS-10.1	27371013

ECLASS-11.1	27371013
ECLASS-12.0	27371013
ETIM-5.0	EC002498
customs tariff number	85363010
GTIN	4048879010894
Packaging unit	1
<b>Compatibility   Compatible with</b>	
Appropriate contactors	3 RT 20.25/26/27/28
<b>Electrical data</b>	
Damping factor	1.5× UN
<b>Electrical data   Input</b>	
Input voltage DC min.	21 V
Input voltage DC max.	27 V
<b>Installation   Connection</b>	
Connection information	Plug contact
<b>Device protection   Media</b>	
Flame resistance	flame retardant
<b>Mechanical data   Material data</b>	
Combustibility class housing (UL94)	V-0
Material housing	Plastic
<b>Mechanical data   Mounting data</b>	
Height	18,5 mm
Width	30,2 mm
Depth	11,5 mm
<b>Environmental characteristics   Climatic</b>	
Operating temperature min.	-20 °C
Operating temperature max.	70 °C