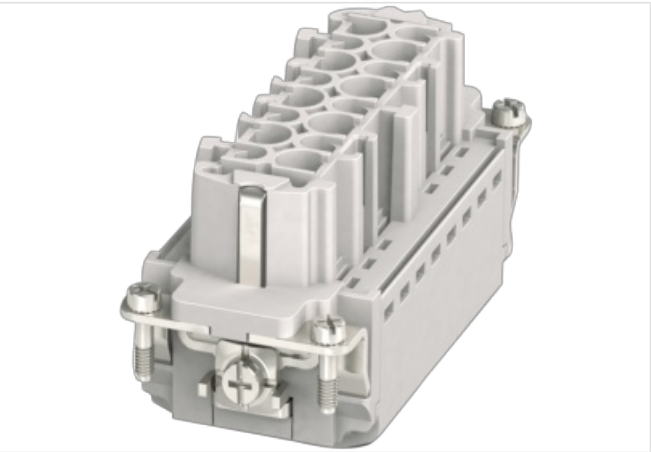


B16 female 6+2-pole, Push-in, 800/500 V, 16 A

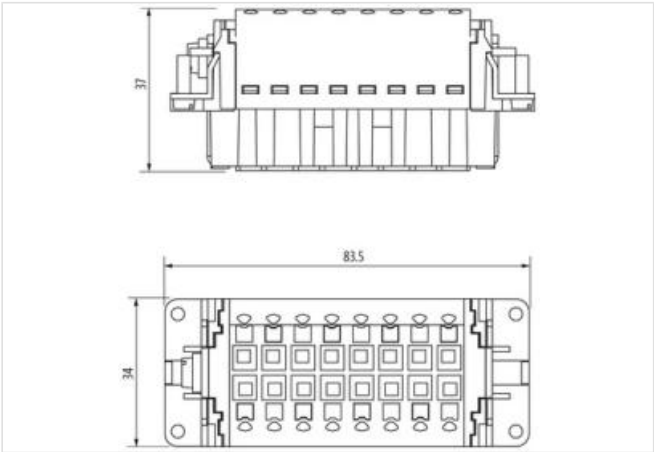
B16  
Female  
6+2-pole  
Push-In terminals  
Technical data will be only guaranteed with Murrelektronik components.  
Please use wire end ferrule.

Link to Product

Illustration



Product may differ from Image



Commercial data	
ECLASS-6.0	27143424
ECLASS-6.1	27261204
ECLASS-7.0	27440205
ECLASS-8.0	27440205
ECLASS-9.0	27440205
ECLASS-10.1	27440205
ECLASS-11.1	27440205
ECLASS-12.0	27440205
ETIM-5.0	EC000438
customs tariff number	85389099
GTIN	4048879665056
Packaging unit	1
Electrical data   Supply	
Operating voltage AC per power contact max.	830 V
Operating voltage AC per signal contact max.	500 V
Operating voltage DC per power contact max.	830 V
Operating voltage DC per signal contact max.	500 V
Operating current	16 A
Installation	
Connection cross section min.	0,14 mm²

Connection cross section max.	2,5 mm <sup>2</sup>
AWG number min.	26
AWG number max.	13

**Installation | Connection**

Stripping length min.	8 mm
Stripping length max.	10 mm
Connection	Push-In spring clamp terminals
Gender	female
Mating cycles min.	500

**Installation | Pin assignment**

No. of poles	6 + 2 + PE
--------------	------------

**Device protection | Electrical**

Pollution Degree	3
Rated surge voltage power contacts	8 kV
Rated surge voltage signal contacts	6 kV
Overvoltage category (EN 60950-1)	III

**Mechanical data | Material data**

Coating contact	silver-plated
Combustibility class (UL94)	V-0
Material contact	Brass
Material contact carrier	PA

**Mechanical data | Mounting data**

Size	B16
Height	37 mm
Width	34 mm
Depth	83,5 mm

**Environmental characteristics | Climatic**

Operating temperature min.	-40 °C
Operating temperature max.	125 °C