

B10 Bulkhead mounted h., IP65

Double locking lever m.

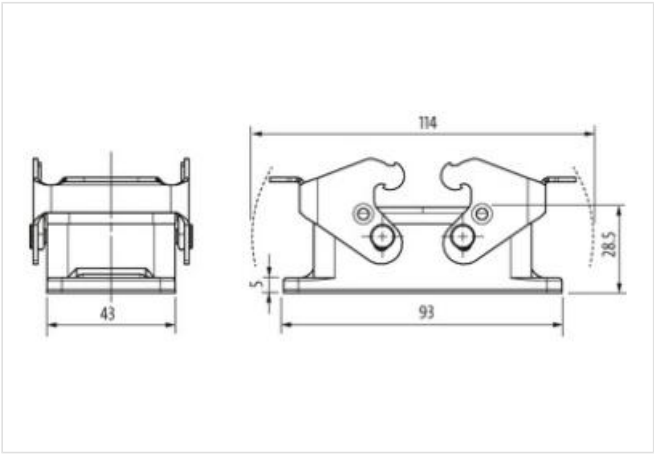
B10  
Bulkhead mounted housing  
Double locking lever  
IP65  
Technical data will be only guaranteed with Murrelektronik components.

Link to Product

Illustration



Product may differ from Image



Commercial data

ECLASS-6.0	27143424
ECLASS-6.1	27261203
ECLASS-7.0	27440202
ECLASS-8.0	27440202
ECLASS-9.0	27440202
ECLASS-10.1	27440202
ECLASS-11.1	27440202
ECLASS-12.0	27440202
ETIM-5.0	EC000437
customs tariff number	85389099
GTIN	4048879644945
Packaging unit	1

Installation | Connection

Mating cycles min.	500
--------------------	-----

Device protection | Electrical

Degree of protection (EN IEC 60529)	IP65
Additional condition protection degree	inserted, locked, with screw connection

Mechanical data

Housing type	Bulkhead mounted housing
--------------	--------------------------

Mechanical data | Material data

Coating housing	powder-coated
Coating locking	verzinkt
Material gasket	NBR

Material housing	Aluminum die casting
------------------	----------------------

Locking material	Steel
------------------	-------

**Mechanical data | Mounting data**

Size	B10
------	-----

Height	28,5 mm
--------	---------

Width	43 mm
-------	-------

Depth	93 mm
-------	-------

Looking techniques	Double locking lever
--------------------	----------------------

**Environmental characteristics | Climatic**

Operating temperature min.	-40 °C
----------------------------	--------

Operating temperature max.	100 °C
----------------------------	--------

Climatic category (EN IEC 60068-1)	40/100/21
------------------------------------	-----------