

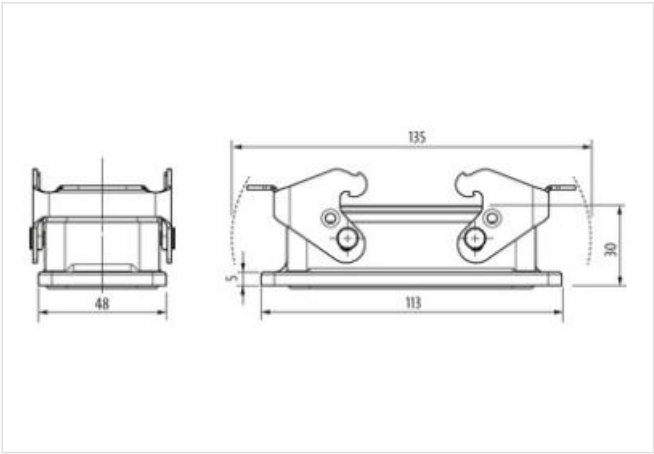
B16 Bulkhead mounted h., IP67

Double locking lever m.

B16
Bulkhead mounted housing
Double locking lever
IP67
Technical data will be only guaranteed with Murrelektronik components.

Link to Product

Illustration



Product may differ from Image

Commercial data

ECLASS-6.0	27143424
ECLASS-6.1	27261203
ECLASS-7.0	27440202
ECLASS-8.0	27440202
ECLASS-9.0	27440202
ECLASS-10.1	27440202
ECLASS-11.1	27440202
ECLASS-12.0	27440202
ETIM-5.0	EC000437
customs tariff number	85389099
GTIN	4048879647267
Packaging unit	1

Installation | Connection

Mating cycles min.	500
--------------------	-----

Device protection | Electrical

Degree of protection (EN IEC 60529)	IP67
Additional condition protection degree	inserted, locked

Mechanical data

Housing type	Bulkhead mounted housing
--------------	--------------------------

Mechanical data | Material data

Coating housing	powder-coated
Coating locking	verzinkt
Material gasket	NBR

Material housing	Aluminum die casting
------------------	----------------------

Locking material	Steel
------------------	-------

Mechanical data | Mounting data

Size	B16
------	-----

Height	30 mm
--------	-------

Width	48 mm
-------	-------

Depth	113 mm
-------	--------

Looking techniques	Double locking lever
--------------------	----------------------

Environmental characteristics | Climatic

Operating temperature min.	-40 °C
----------------------------	--------

Operating temperature max.	100 °C
----------------------------	--------

Climatic category (EN IEC 60068-1)	40/100/21
------------------------------------	-----------