

A3 Surface mounted h., low profile, IP65

Single locking lever m., side entry M20

A3

Surface mounted housing (low)

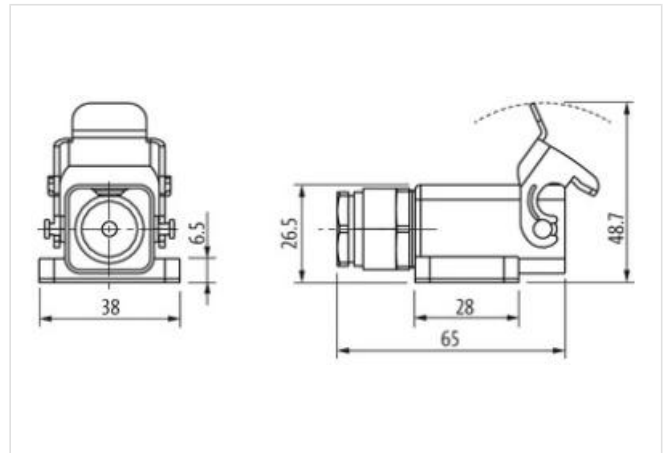
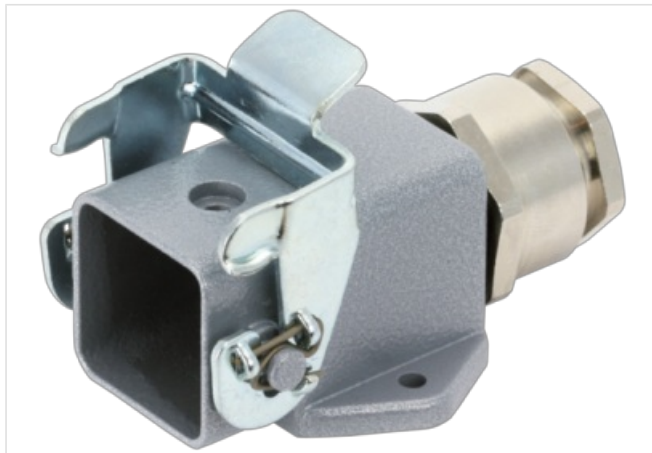
Single locking lever

IP65

Technical data will be only guaranteed with Murrelektronik components.

[Link to Product](#)

Illustration



Product may differ from Image

Commercial data

ECLASS-6.0	27279221
ECLASS-6.1	27261203
ECLASS-7.0	27440202
ECLASS-8.0	27440202
ECLASS-9.0	27440202
ECLASS-10.1	27440202
ECLASS-11.1	27440202
ECLASS-12.0	27440202
ETIM-5.0	EC000437
customs tariff number	85389099
GTIN	4048879716819
Packaging unit	1

Installation

Cable outlet	laterally
--------------	-----------

Installation | Connection

Mounting set	M20
Mating cycles min.	500

Device protection | Electrical

Degree of protection (EN IEC 60529)	IP65
Additional condition protection degree	inserted, locked, with screw connection

Mechanical data

Housing type	Surface mounted housing
--------------	-------------------------

Mechanical data | Material data

Coating housing	powder-coated
-----------------	---------------

Coating locking	verzinkt
-----------------	----------

Material gasket	NBR
-----------------	-----

Material housing	Zinc die-casting
------------------	------------------

Locking material	Steel
------------------	-------

Mechanical data | Mounting data

Size	A3
------	----

Height	26,5 mm
--------	---------

Width	65 mm
-------	-------

Depth	38 mm
-------	-------

Looking techniques	Single locking lever
--------------------	----------------------

Environmental characteristics | Climatic

Operating temperature min.	-40 °C
----------------------------	--------

Operating temperature max.	100 °C
----------------------------	--------

Climatic category (EN IEC 60068-1)	40/100/21
------------------------------------	-----------