

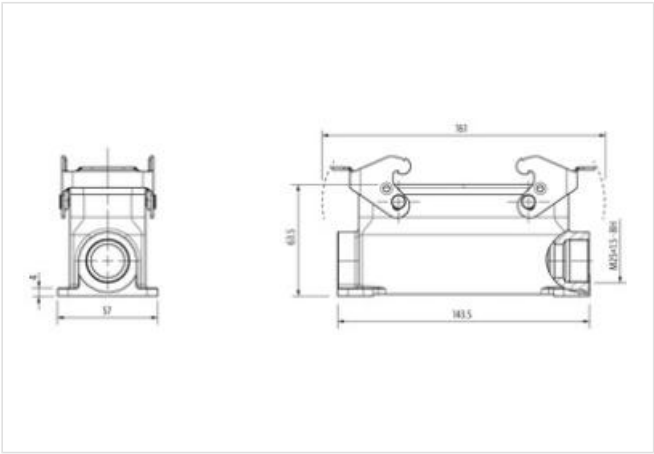
B24 Surface mounted h., low profile, IP65

Double locking lever m., side entry M25

B24  
Surface mounted housing (low)  
Double locking lever  
IP65  
Technical data will be only guaranteed with Murrelektronik components.

Link to Product

Illustration



Product may differ from Image

Commercial data	
ECLASS-6.0	27143424
ECLASS-6.1	27261203
ECLASS-7.0	27440202
ECLASS-8.0	27440202
ECLASS-9.0	27440202
ECLASS-10.1	27440202
ECLASS-11.1	27440202
ECLASS-12.0	27440202
ETIM-5.0	EC000437
customs tariff number	85389099
GTIN	4048879646833
Packaging unit	1
Installation	
Cable outlet	laterally
Installation   Connection	
Mounting set	M25
Mating cycles min.	500
Device protection   Electrical	
Degree of protection (EN IEC 60529)	IP65
Additional condition protection degree	inserted, locked, with screw connection
Mechanical data	
Housing type	Surface mounted housing
Mechanical data   Material data	

Coating housing	powder-coated
-----------------	---------------

Coating locking	verzinkt
-----------------	----------

Material gasket	NBR
-----------------	-----

Material housing	Aluminum die casting
------------------	----------------------

Locking material	Steel
------------------	-------

**Mechanical data | Mounting data**

Size	B24
------	-----

Height	63,5 mm
--------	---------

Width	57 mm
-------	-------

Depth	143,5 mm
-------	----------

Looking techniques	Double locking lever
--------------------	----------------------

**Environmental characteristics | Climatic**

Operating temperature min.	-40 °C
----------------------------	--------

Operating temperature max.	100 °C
----------------------------	--------

Climatic category (EN IEC 60068-1)	40/100/21
------------------------------------	-----------