

B10 Hood, high profile, IP65

Single locking lever, top entry M25

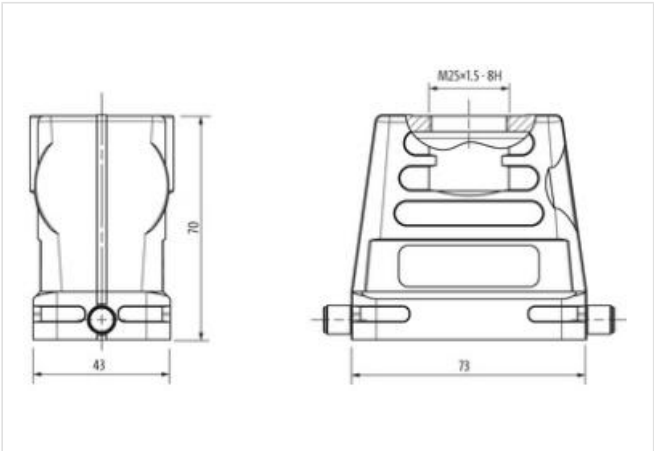
B10
Hood (high)
Single locking lever
IP65
Technical data will be only guaranteed with Murrelektronik components.

Link to Product

Illustration



Product may differ from Image



Commercial data

ECLASS-6.0	27143424
ECLASS-6.1	27261203
ECLASS-7.0	27440202
ECLASS-8.0	27440202
ECLASS-9.0	27440202
ECLASS-10.1	27440202
ECLASS-11.1	27440202
ECLASS-12.0	27440202
ETIM-5.0	EC000437
customs tariff number	85389099
GTIN	4048879646406
Packaging unit	1

Installation

Cable outlet	straight
--------------	----------

Installation | Connection

Mounting set	M25
Mating cycles min.	500

Device protection | Electrical

Degree of protection (EN IEC 60529)	IP65
Additional condition protection degree	inserted, locked, with screw connection

Mechanical data

Housing type	Hood
--------------	------

Mechanical data | Material data

Coating housing	powder-coated
-----------------	---------------

Coating locking	verzinkt
-----------------	----------

Material housing	Aluminum die casting
------------------	----------------------

Locking material	Steel
------------------	-------

Mechanical data | Mounting data

Size	B10
------	-----

Height	70 mm
--------	-------

Width	43 mm
-------	-------

Depth	73 mm
-------	-------

Locking techniques	Single locking lever
--------------------	----------------------

Environmental characteristics | Climatic

Operating temperature min.	-40 °C
----------------------------	--------

Operating temperature max.	100 °C
----------------------------	--------

Climatic category (EN IEC 60068-1)	40/100/21
------------------------------------	-----------