

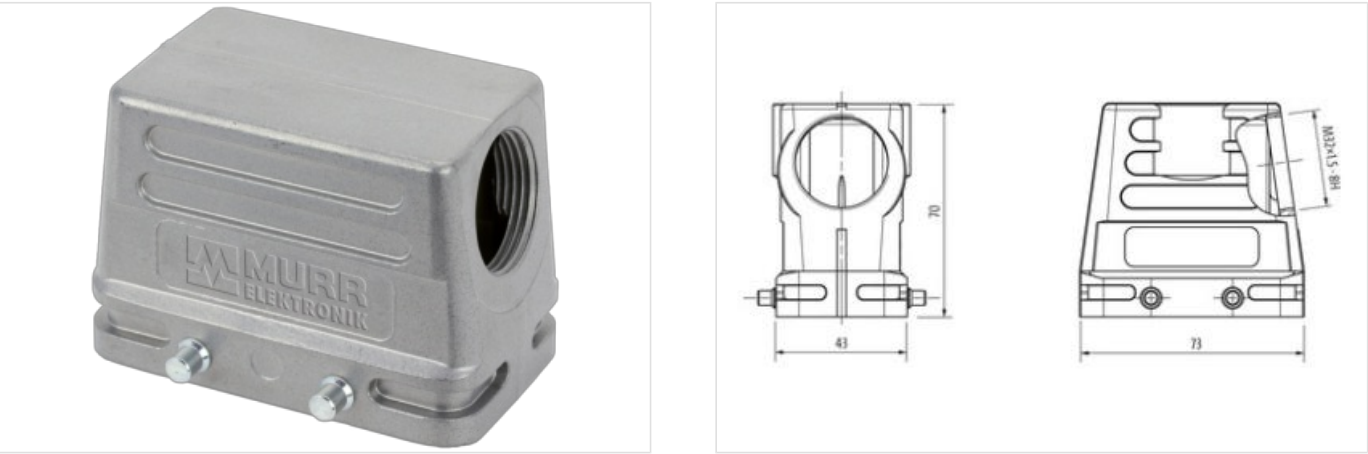
B10 Hood, high profile, IP65

Double locking lever, side entry M32

B10  
Hood (high)  
Double locking lever  
IP65  
Technical data will be only guaranteed with Murrelektronik components.

Link to Product

Illustration



Product may differ from Image

Commercial data	
ECLASS-6.0	27143424
ECLASS-6.1	27261203
ECLASS-7.0	27440202
ECLASS-8.0	27440202
ECLASS-9.0	27440202
ECLASS-10.1	27440202
ECLASS-11.1	27440202
ECLASS-12.0	27440202
ETIM-5.0	EC000437
customs tariff number	85389099
GTIN	4048879646376
Packaging unit	1
Installation	
Cable outlet	laterally
Installation   Connection	
Mounting set	M32
Mating cycles min.	500
Device protection   Electrical	
Degree of protection (EN IEC 60529)	IP65
Additional condition protection degree	inserted, locked, with screw connection
Mechanical data	
Housing type	Hood
Mechanical data   Material data	

Coating housing	powder-coated
-----------------	---------------

Coating locking	verzinkt
-----------------	----------

Material housing	Aluminum die casting
------------------	----------------------

Locking material	Steel
------------------	-------

**Mechanical data | Mounting data**

Size	B10
------	-----

Height	70 mm
--------	-------

Width	43 mm
-------	-------

Depth	73 mm
-------	-------

Locking techniques	Double locking lever
--------------------	----------------------

**Environmental characteristics | Climatic**

Operating temperature min.	-40 °C
----------------------------	--------

Operating temperature max.	100 °C
----------------------------	--------

Climatic category (EN IEC 60068-1)	40/100/21
------------------------------------	-----------