

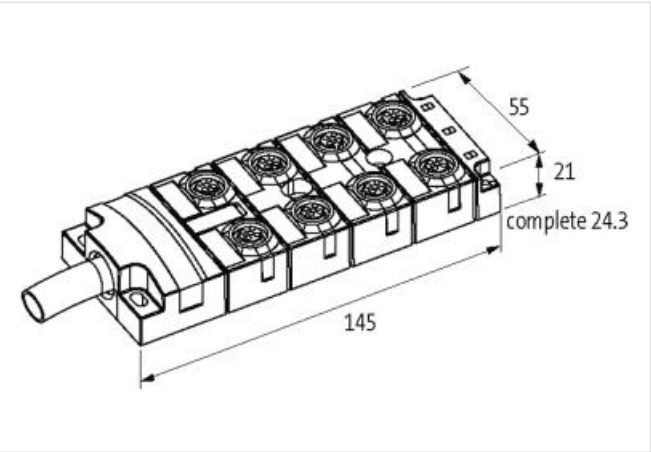
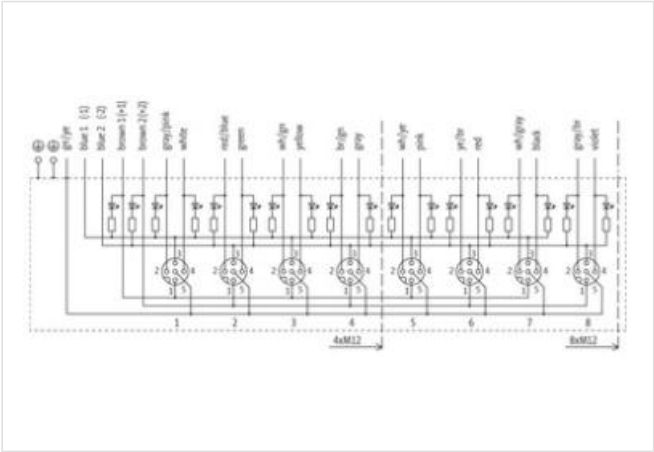
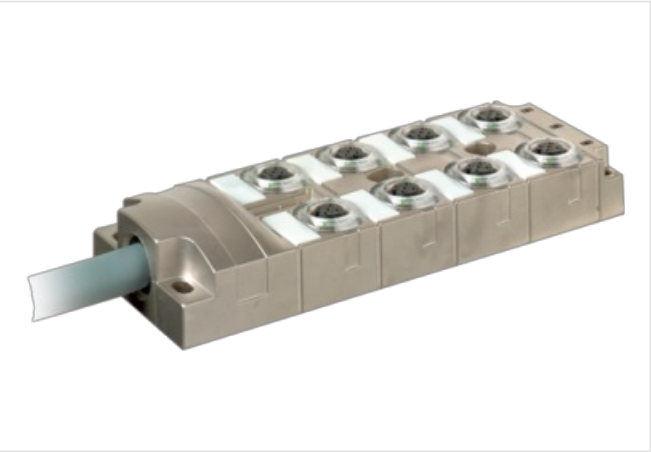
MVP-METALL, 8XM12, 5POLE, PRE-WIRED CABLE

5.0m PUR 16x0,34+5X0.75, UL/CSA

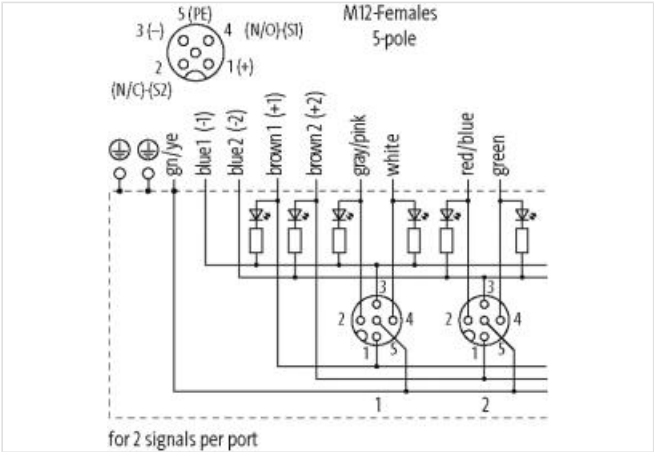
8-way, 5-pole  
5.0 m  
potentially separated  
Replaces identical product (Art.No. 27522)  
with LED for digital PNP-signals 24 V DC  
Separate protection of ports 1, 3, 5, 7 or 2, 4, 6, 8 possible.  
Further cable lengths on request.

Link to Product

Illustration



Product may differ from Image



| Commercial data |          |
|-----------------|----------|
| ECLASS-6.0      | 27279219 |
| ECLASS-6.1      | 27279219 |
| ECLASS-7.0      | 27279219 |

|                       |               |
|-----------------------|---------------|
| ECLASS-8.0            | 27279219      |
| ECLASS-9.0            | 27440108      |
| ECLASS-10.1           | 27440108      |
| ECLASS-11.1           | 27440108      |
| ECLASS-12.0           | 27440108      |
| ETIM-5.0              | EC002585      |
| customs tariff number | 85444290      |
| GTIN                  | 4048879352581 |
| Packaging unit        | 1             |

**Electrical data | Supply**

|                                    |      |
|------------------------------------|------|
| Operating voltage DC               | 24 V |
| Current operating per contact max. | 4 A  |

**Installation | Connection**

|              |         |
|--------------|---------|
| Mounting set | M12 x 1 |
|--------------|---------|

**Device protection | Electrical**

|                                     |                  |
|-------------------------------------|------------------|
| Degree of protection (EN IEC 60529) | IP65, IP67, IP68 |
|-------------------------------------|------------------|

**Mechanical data | Material data**

|                  |                  |
|------------------|------------------|
| Coating housing  | Nickel           |
| Material housing | Zinc die-casting |

**Mechanical data | Mounting data**

|                 |                |
|-----------------|----------------|
| Mounting method | Schraubgewinde |
|-----------------|----------------|

**Environmental characteristics | Climatic**

|  |                            |
|--|----------------------------|
| Operating temperature min.             | -25 °C                     |
| Operating temperature max.             | 90 °C                      |
| Additional condition temperature range | depending on cable quality |

**Installation | Cable**

|  |   |
|--|---|
| Cable identification                     | 403   |
| Printing color of wire insulation        | white (isolation blue), white (isolation brown)   |
| Jacket Color                             | gray  |
| Type of Certificate                      | cURus   |
| Amount stranding                         | 1   |
| Stranding                                | 5 wires around Core filler twisted  |
| Stranding factor min.                    | 70 mm   |
| Stranding factor max.                    | 70 mm   |
| Amount stranding (type 2)                | 1   |
| Stranding (type 2)                       | 16 wires counter-rotating twisted   |
| Stranding factor min. (type 2)           | 105 mm  |
| Stranding factor max. (type 2)           | 105 mm  |
| Banding                                  | Fleece  |
| Filler                                   | yes   |
| wire arrangement                         | (gray-pink, violet, brown-gray, black, gray-white, red, brown-yellow, pink, yellow-white, gray, brown-green, yellow, green-white, green, red-blue, white), brown 1, blue 2, brown 2, green-yellow, blue 1 |
| Cable weight                             | 253 g/m   |
| Material jacket                          | PUR   |
| Shore hardness jacket                    | 85 ± 5 Shore A  |
| Freedom from ingredients (jacket)        | lead-free, cadmium-free, CFC-free, halogen-free, silicone-free, LABS-free   |
| Outer-diameter (jacket)                  | 11,5 mm   |
| Tolerance outer diameter (sheath)        | ± 5 %   |
| Material wire insulation                 | TPE   |
| Amount wires                             | 5   |
| Outer diameter insulation                | 1,8 mm  |
| Outer diameter tolerance core insulation | ± 5 %   |

|   |   |
|---|---|
| Shore hardness wire insulation                    | 55 ± 5 Shore D  |
| Ingredient freeness wire insulation               | lead-free, CFC-free, halogen-free, silicone-free, LABS-free |
| Printing color of wire insulation                 | white (isolation blue), white (isolation brown)             |
| Traversing distance (C-track)                     | 1,8 m @ 25 °C   |
| Amount strands (wire)                             | 96  |
| Diameter of single wires                          | 0,1 mm  |
| Conductor crosssection (wire)                     | 0,75 mm <sup>2</sup>  |
| Material conductor wire                           | Stranded copper wire, bare                                  |
| Conductor type (wire)                             | strand class 6  |
| Material wire insulation (Data)                   | TPE   |
| Outer diameter wire insulation (Data)             | 1,4 mm  |
| Tolerance outer diameter wire insulation (data)   | ± 5 %   |
| Shore hardness wire insulation (Data)             | 55 ± 5 Shore D  |
| Ingredient freeness wire insulation (Data)        | lead-free, CFC-free, halogen-free, silicone-free, LABS-free |
| Amount wires (Data)                               | 16  |
| Amount strands wire (Data)                        | 42  |
| Diameter of single wires (Data)                   | 0,1 mm  |
| Conductor crosssection wire (Data)                | 0,34 mm <sup>2</sup>  |
| Material conductor wire (Data)                    | Stranded copper wire, bare                                  |
| Wire conductor type (Data)                        | strand class 6  |
| Max. rated voltage (conductor - conductor)        | 500 V   |
| Max. rated voltage (conductor - ground)           | 300 V   |
| Current load capacity (standard)                  | to DIN VDE 0298-4   |
| Current load capacity min. wire                   | 9 A   |
| Current load capacity min. Wire (Data)            | 4 A   |
| Electrical resistance line constant wire          | 26 Ω/km @ 20 °C   |
| Electrical resistance coating wire (Data)         | 57 Ω/km @ 20 °C   |
| AC withstand voltage (wire - wire)                | 2 kV @ 60 s   |
| Power frequency withstand voltage (wire - jacket) | 2 kV @ 60 s   |
| Min. operating temperature (static)               | -40 °C  |
| Max. operating temperature (fixed)                | 90 °C   |
| Operating temperature min. (dynamic)              | -25 °C  |
| Operating temperature max. (dynamic)              | 80 °C   |
| Flame resistance                                  | UL 1581 § 1100 FT2   IEC 60332-2-2   UL 1581 § 1090         |
| chemical resistance                               | Good, application-related testing                           |
| Gasoline resistance                               | Good, application-related testing                           |
| Oil resistance                                    | Good, application-related testing   DIN EN 60811-404        |
| Bending radius (installation)                     | x Outer diameter  |
| Bending radius (fixed)                            | 5 x Outer diameter  |
| Bending radius (dynamic)                          | 10 x Outer diameter   |
| Travel speed (C-track)                            | 5 Mio. @ 25 °C  |

#### Connection type 2

|                          |                |
|--------------------------|----------------|
| Family construction form | free cable end |
| No. of poles             | 16             |
| Family construction form | M12            |
| Gender                   | female         |
| Color contact carrier    | black          |
| Coding                   | A              |
| No. of poles             | 5              |
| PIN 1                    | +              |
| PIN 2                    | NC S 2         |
| PIN 3                    | -              |
| PIN 4                    | NO S 1         |

PIN 5

PE